



# Ridge Creek Fire

Idaho Panhandle National Forests, Coeur d'Alene River Ranger District  
Fire Information 208-557-8813

<https://inciweb.nwcg.gov/incident-information/idipf-ridge-creek>

**August 4, 2023**

---

**Location:** Approximately 3.5 miles east of the north tip of Hayden Lake, along the Hayden Creek Road (FSR 437) in the Ridge Creek drainage

**Start Date:** 8/3/2023    **Cause:** Under Investigation    **Size:** 300-400 acres    **Containment:** 0%

**Total Personnel:** 50    **Engines:** 3    **Hand Crews:** 1

A Type 3 Incident Management Team has been ordered and will be inbriefed today at 6pm. During initial size-up, the fire was 5-10 acres, burning in heavy timber. However, by 6:00 PM, air resources already estimated the fire to be 100-150 acres, spreading primarily up-drainage to the northeast, pushed by southwest winds aligning with the drainage. The fire is burning on both sides of FSR437 (Hayden Creek Road), necessitating an emergency closure of that road. The current estimation is 300-400 acres, air resources will provide undated estimates once the weather inversion and smoke lift.

Ten interagency aircraft were engaged on the fire yesterday, from 4pm until dark, including 4 firebosses, air attack, Type 1 and Type 2 helicopters, two large air tankers and a lead plane. A hotshot crew, three engines and crewmembers are on scene, and numerous equipment and other resources are being ordered.

Fire managers and Kootenai County Emergency Management continue to assess the situation and will update the status as warranted. Follow Kootenai County Emergency Management Facebook Page for updates and sign up for automated Kootenai Alert for emergency alerts. <https://www.kcsheriff.com/186/Emergency-Management>

## EVACUATION STATUS

A message from the Kootenai County Emergency Management: Out of an abundance of caution, residents within the above boundary (see attached map) are being provided with a **GET READY** notification. The Ridge Creek Fire is in your area and it would be wise to consider planning and or packing in the event an evacuation becomes necessary. Residents are urged to create and maintain a defensible space and harden their home against the potential for wildfire. More information will be forthcoming, as it becomes available. Please continue to monitor official sources and call 208-446-2292 for any questions regarding evacuations.

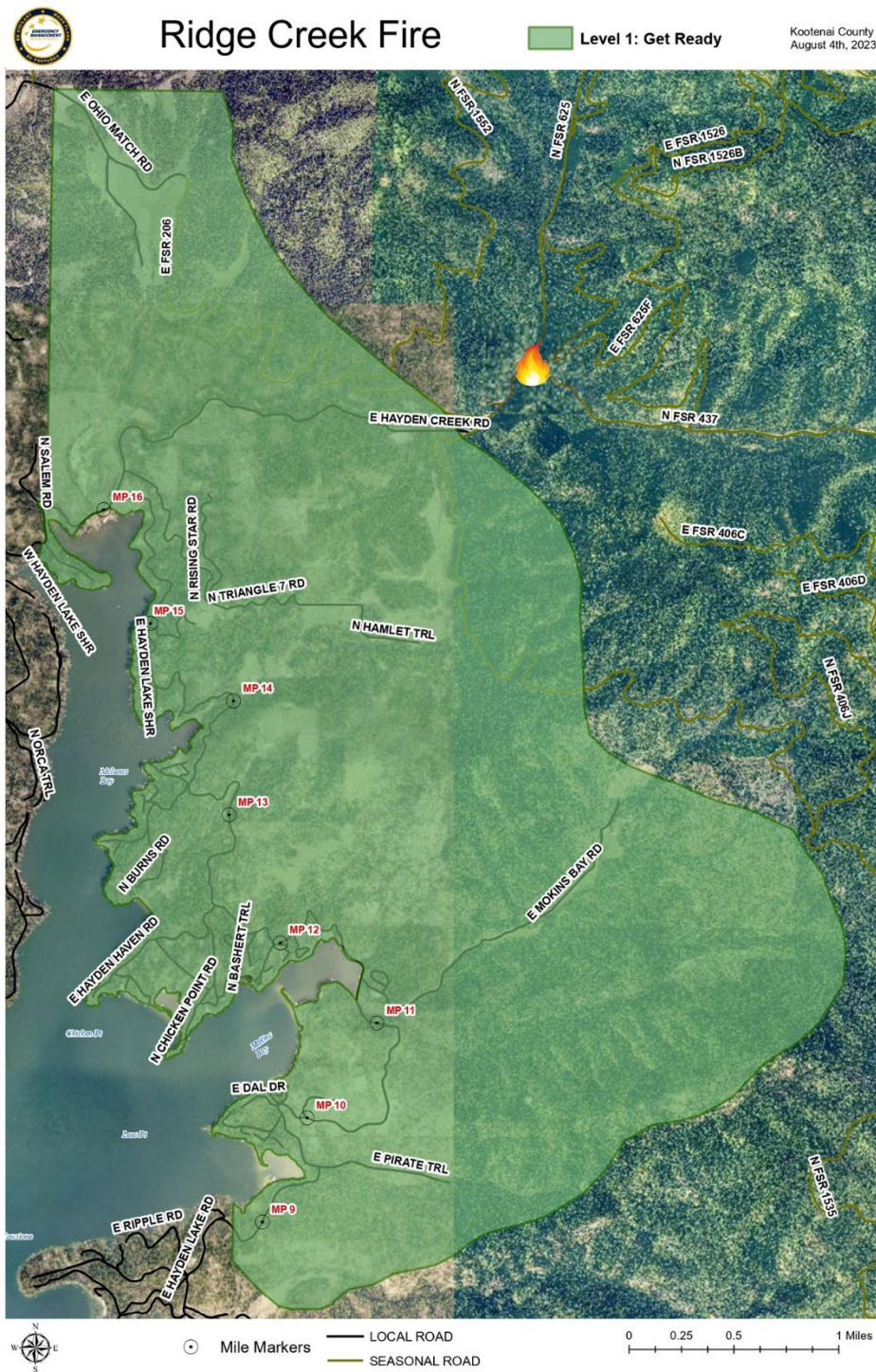
## CLOSURES AND SPECIAL MESSAGES

An emergency closure was implemented yesterday afternoon, prohibiting foot, mechanized, motorized and stock travel on Hayden Creek Road (FSR437). The public is encouraged to avoid the surrounding areas and give space to the fire personnel and engines.

Kootenai County Sheriff Office is advising Hayden Lake residents that Hayden Lake is shut down to boaters indefinitely to accommodate USFS fire crews to access by aircraft. Public access boat launches are closed. Please keep all boats off Hayden Lake until further notice. Thank you for your cooperation.

## WEATHER AND FIRE BEHAVIOR

Partly sunny, with a high near 82. West wind 6 to 9 mph today, becoming southwest and 7 mph tonight. Minimum RH of 23 percent. A 20 percent chance of showers and thunderstorms after 2 AM. Widespread haze throughout the day. Tonight, will be mostly cloudy, with a low around 65.







Smoke plume rising from the Ridge Creek Fire. USFS Photo by E. Hewitt.